

Neets Control – DelTa

Rack mounted control system with iOS/Android support



Neets Control – DelTa provides complete control off all room functions.

DelTa has a variety of functions for demanding AV-installations such as: Built-in Audio mixer, control the room with touch devices or NEB extensions, create your own GUI design and easy room monitoring with Neets Central Control software

DelTa is a versatile AV control system and offers complete control of demanding AV-installations.

Features

Rack mounted AV control system with iOS/Android support

The world's most compact AV control system – no external processors required

1 Bi-directional RS-485 port

Used for controlling projectors, displays, amplifiers & other AV devices with feedback functionality

3 Bi-directional RS-232 port or 6 IR ports

Used for controlling projectors, displays, amplifiers & other AV devices with feedback functionality

5 Uni-directional RS-232 or 10 IR ports

Used for sending commands to projectors or other AV devices using serial or infrared communication

1 Ethernet port

Used for controlling 10 LAN devices and connection to Central Control and Project Designer

16 General Purpose I/O ports

Used for input/output control of relays, switches and sensors

Built-in relays

2 x potential free relays (assignable)

1 NEB port (Neets Expansion Bus)

Add. up to 5 additional devices - choose between Keypad, Level Control or Port Expansion (serial and I/O).

Audio mixer (built-in)

Control and mix audio from up to 6 difference sources. Transmit audio to 2 external amplifiers

2 Lighting controls

Control and dim lighting levels in rooms and meeting facilities

Custom graphical user interface (GUI)

Create your own custom graphical user interface for the AV-installation in your own design

Automatic timer functions

A build-in timer can be set to switch a projector or a screen off after a period of inactivity

Email notifications and warnings

Email notification on lamp/filter hours and warnings

Included: Configuration through our free and no-license software: Neets Project Designer

Neets Control – DelTa

Rack mounted control system with iOS/Android support

iOS/Android devices supported

DelTa also offers extensive control features through a built-in web server.

Through the free Neets Control App, you connect with the DelTa through WiFi and the IP address of the DelTa.

Create custom graphical user interfaces for convenient AV and room control using a PC or a touch device (Apple iOS or Android) directly in Neets Project Designer.

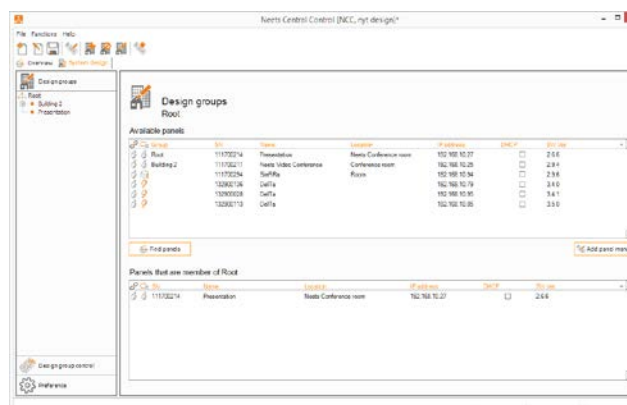


Neets Central Control included:

Monitor rooms with DelTa installed from a central location. Get status on lamp and filter hours for your projectors for preventive maintenance

Control groups or individual rooms over network – e.g. one "POWER OFF" command for all rooms, floors and levels.

From AV/IT support you can immediately get an overview of a room and test the control commands



Technical Specifications

Communication ports:
1 x RS-485 (half or full duplex)
3 x RS-232 (TX and RX) or 6 IR
Baud: 1200 – 115200

Data Bit: 7/8
Parity: None, Even, Odd
Stop Bit: 1/1.5/2

5 x RS-232 or 10 IR (TX only)
Baud: 1200 – 115200
Parity: None, even, odd
Stop Bit: 1/1.5/2

IR:
Transmit
400 Hz – 500 kHz
Devices: 10

1 x Ethernet port
Speed: 10/100 Mbit
auto-detect
Devices: 10

16 x I/Os (GPIO)
Input:
Sense Low: <1 VDC
Sense High: >4 VDC

Output:
Type: Open drain
Max Voltage: 24 VDC
Max Current: 0.5 A

Audio mixer (built-in)
2 x Unbalanced in (1 can be mic)
4 x Balanced or unbalanced in
4 x Balanced or unbalanced out

Built-in relays
2 x potential free (assignable)
Power capacity: 230 VAC/ 8A

Neets Expansion Bus (NEB)
12 V (0.3 A) output
5 devices

Lighting control
2 x 0-10 VDC output

Included in box
1 x 240 IEC cable
Phoenix connectors

AC line input
100-240 V

Dimensions
Width: 483 mm/ 437 mm
Height: 44 mm (1U)
Depth: 146 mm

Weight: 1,860 kg

Compliance
Approval: CE
IEC/ EN 61000-6-1
IEC/ EN 61000-6-2

Product item numbers:
310-0310: Neets Control – DelTa