

Too often, classroom lessons are dry and lacking in visual stimulation...

Conventional Teaching

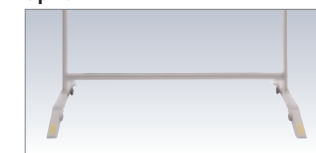
- Pasting animal photos, maps, or other visual aids on a board is slow, cumbersome, and dull.
- Lessons consist mainly of written text. There are too few colourful visual elements that can captivate and engage children.
- The same type of materials are used again and again, so lessons tend to become monotonous.
- Materials and information must be prepared far in advance.
- Good education begins with effective teaching materials – but these can be expensive to produce for every lesson.

UB-T781W / UB-T781 / UB-T761 / UB-T780 Specifications

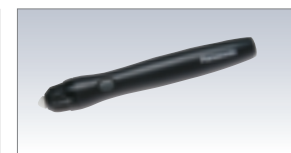
General			
Power Supply	AC 100-240 V, 50/60 Hz		
Power Consumption	UB-T781W / T781 / T761	0.4A	[Standby/Operational]
	UB-T780	0.1A	[Standby/Operational]
External Dimensions* (H x W x D, without stand)	UB-T781W	52.8 in. x 74.8 in. x 3.5 in.	(1,340 mm x 1,899 mm x 89 mm)
	UB-T781 / T780	52.8 in. x 69.0 in. x 3.5 in.	(1,340 mm x 1,752 mm x 89 mm)
	UB-T761	45.0 in. x 58.6 in. x 3.5 in.	(1,142 mm x 1,489 mm x 89 mm)
Panel Dimensions* (H x W)	UB-T781W	46.3 in. x 72.4 in.	(1,175 mm x 1,839 mm)
	UB-T781 / T780	46.3 in. x 66.6 in.	(1,175 mm x 1,692 mm)
	UB-T761	38.5 in. x 56.3 in.	(977 mm x 1,429 mm)
Effective Area (H x W)	UB-T781W	45.9 in. x 72.0 in.	(958 mm x 1,829 mm)
	UB-T781 / T780	45.9 in. x 59.1 in.	(1,165 mm x 1,502 mm)
	UB-T761	38.1 in. x 48.7 in.	(967 mm x 1,239 mm)
Weight* (without stand)	UB-T781W	61.7 lbs	(28 kg)
	UB-T781	59.5 lbs	(27 kg)
	UB-T780	57.3 lbs	(26 kg)
Panel Surface	UB-T781W	46.3 lbs	(21 kg)
	UB-T761	46.3 lbs	(21 kg)
Panel Surface: PET coated metal plate			
Interactive Function			
Interface	UB-T781W / T781 / T761	USB2.0 [B-Type Connector] x 1	
	UB-T780	USB2.0 [A-Type Connector] x 2	
Battery for Electronic Pen	UB-T781W	LR03 (AAA size) x 1	Alkaline battery [included]
	UB-T780	LR03 (AAA size) x 1	Alkaline battery [included]
Position Sensor: Ultrasonic receiver & infrared rays sensor			

Design and specifications are subject to change without notice. Microsoft®, Windows®, Windows Vista® and the Windows logo are either registered trademarks or trademarks of Microsoft Corporation in the United States and/or other countries. IBM and AT are trademarks of International Business Machines Corporation in the United States, other countries, or both. All other product/brand names, trademarks or registered trademarks identified herein are the property of their respective owners. To run the Elite Panaboard software, Microsoft .NET Framework 2.0 or later and DirectX 7.0 or later are required. When you install the Elite Panaboard software on the CD-ROM, NET Framework 2.0 will be installed on your computer if it is not already installed. The system requirements above do not meet the recommended specifications of all operating systems. You must have Windows Media® Player 10 or later, or Adobe® Flash® Player installed to insert and play back video. Inserting and playing back video is not supported in Windows 2000 SP4. The handwriting recognition feature is supported in Windows Vista Ultimate, Windows Vista Home Premium, Windows Vista Business, and Windows XP Tablet PC Edition 2005. If you are using Windows 2000 SP4 or later, or Windows XP Professional, you must have the Tablet PC SDK and Microsoft Windows XP Tablet PC Edition 2005 Recognizer Pack installed to use the handwriting recognition feature. For detailed information, please access the following URL: <http://panasonic.co.jp/pc/products/en/eboard/download/index.html>. The handwriting recognition feature is not supported in Windows Vista Home Basic and Windows XP Home Edition. You must have sufficient available hard disk space to record and play back video.

Option



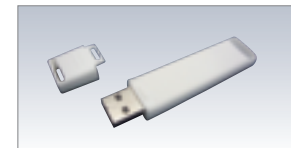
Stand [IX-B061]
Only for UB-T781W / UB-T781 / UB-T780



Electronic Pen [UE-608025]

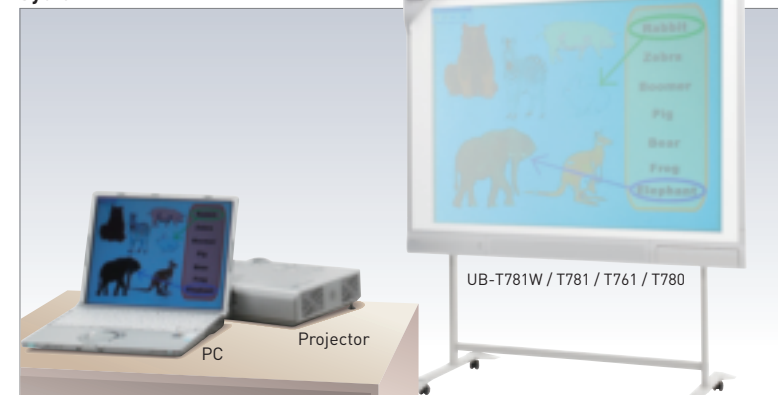


Wireless Kit [UE-608040]
Only for UB-T781W / UB-T781 / UB-T761
[Available in the 2nd quarter of 2009]



Install Free Kit [UE-608050]

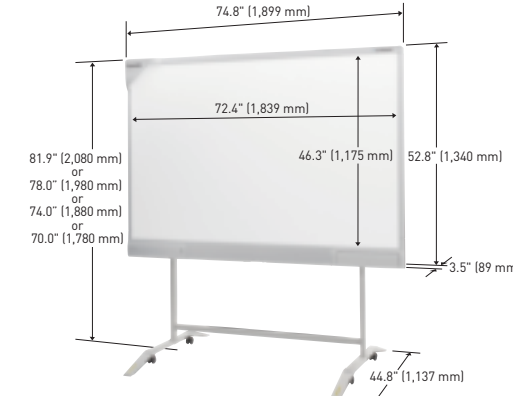
System



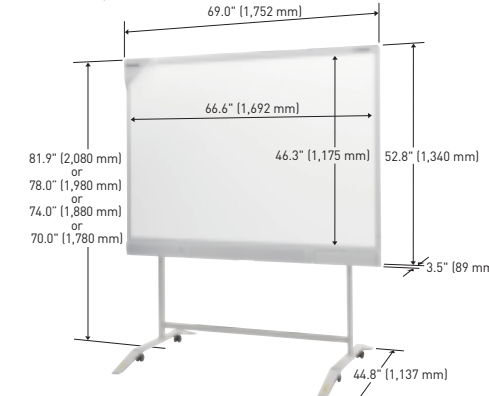
The UB-T781W / UB-T781 / UB-T761 / UB-T780 does not include a PC or projector.

Dimensions [Including optional stand for UB-T781W / UB-T781 / UB-T780]

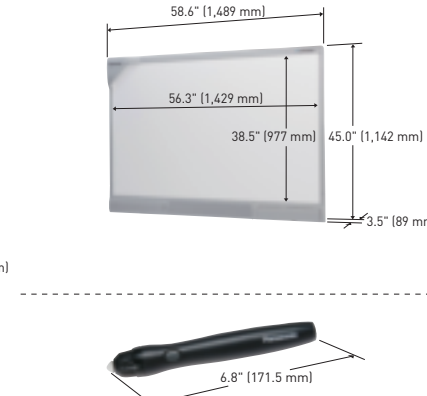
■ UB-T781W



■ UB-T781 / UB-T780



■ UB-T761



For Safety

- To prevent the unit from falling, which can cause injury, remove it when it is no longer in use rather than leaving it installed.
- Do not alter the unit or modify any parts. Alteration or modification can cause fire or electric shock.
- Have the unit installed, removed and disposed of only by qualified service personnel.

Panasonic

Panasonic Canada Inc.

5770 Ambler Drive, Mississauga, ON L4W 2T3
For a local dealer, please call 905-238-2380
www.panasonic.ca

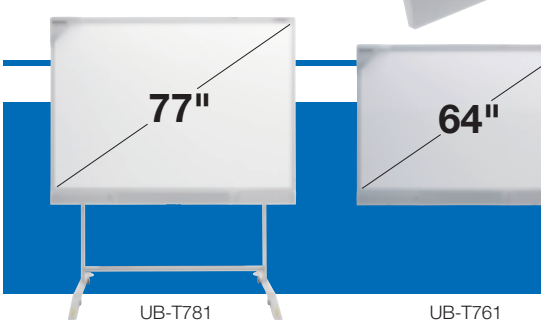
ISO 9001 Quality Management System

Our business processes which produce document, information and network products, from manufacturing to marketing, conform to ISO 9001 Quality Management Systems standard. Design, development, manufacture, installation, repair and maintenance of document, information and network products, their associated devices and consumables. In addition, the plants outside Japan have acquired ISO 9001 certification.



- Large screen for high-impact lessons
- Suppressed light reflection for easier viewing
- Highly durable surface
- Built-in stereo speakers for effective lessons*
- Optional wireless kit*
- Optional "Plug and Go" install free kit

*For UB-T781W / T781 / T761 only



UB-T781

UB-T761

Panasonic ideas for life

Interactive Whiteboard
UB-T781W / UB-T781 / UB-T761 / UB-T780

Elite Panaboard

Active, Visual-Based Learning Makes the Classroom More Exciting

The Elite Panaboard is an advanced educational tool that lets you grab students' attention. It makes it easy to create effective, eye-catching teaching materials and it promotes a style of active, visual-based teaching and learning that makes the classroom fun for both teacher and students.

By connecting a PC with Internet access and a projector, you can bring the huge amount of information available on the Web or any information on your PC right into your classroom. Panasonic and the Elite Panaboard open the door to a new kind of active, visual-based learning.



A Tool that Supports an Advanced, New Style of Teaching

- Animal photos, maps, and other images can be archived in the Elite Panaboard's gallery for quick, easy retrieval and display.
- The electronic pen lets you create vividly coloured drawings and illustrations that make lessons come alive.
- With the Elite Panaboard book's Attachment function you can organize teaching materials and Website addresses, making it easier to prepare lessons.
- Using a PC with Internet access, you can connect to the Internet and display information to the classroom.
- Teaching materials can be quickly produced and stored on a PC and displayed in the classroom.

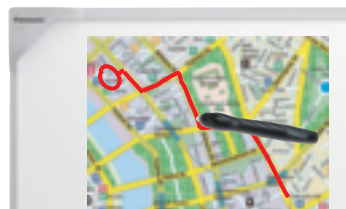
Long-Life Surface and Convenient Tools An Extra Durable Board and Multi-Functional Electronic Pen

The board is designed for durability and scratch-resistance, and uses a special material that prevents reflections from the projector lamp so it is easy to see from a wide angle. The electronic pen functions as a pen, an eraser, and a pointer, just like a computer mouse, and is designed for easy holding, even for the small hands of children.



It's Like Right-Clicking with a PC Mouse Easy Push-and-Press Operation

Simply pushing the button and pressing the pen tip to the board surface serves the same function as clicking the right button of a PC mouse. Pushing the button and quickly double-clicking the board changes the indication immediately to a pointer (arrow tool), even when using a different tool. This easy two-in-one operation brings greater convenience and efficiency to the classroom.



Play Videos Complete with Sound Built-in Stereo Speakers*

The Elite Panaboard's built-in stereo speakers offer the versatility to share audio with your class. Videos with sound and the use of sound effects help to attract the students' attention and make your lessons more effective.

*This function is not available for the UB-T780.



Easy Remote Control Wireless Functions*

With the optional wireless kit, there is no need for a cable to connect the computer and the board. This also allows more flexible classroom layouts.

*This function is not available for the UB-T780.
(Available in the 2nd quarter of 2009)



Make Your Lessons More Effective 2 USB Hub Ports*

The Elite Panaboard is equipped with two additional USB ports. This allows you to connect additional devices to enhance your lessons such as a document camera, a web microscope, or even a printer without using up the necessary resources in your PC.

*This function is not available for the UB-T780.

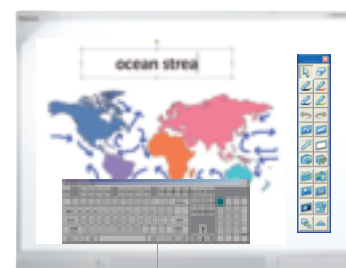


Enjoy Even Greater Ease "Plug and Go" Install Free Kit

By simply connecting the optional install free kit, which comes complete with application software, to the board you can use the application right away without having to install it onto a PC. This saves installation time, and is especially helpful when many computers are being used.

Easy Operation of PC Software Presentation Mode

The Elite Panaboard lets you use teaching materials created with other PC applications. Your favourite applications and the Elite Panaboard book combine to form a powerful tool for creating and displaying eye-catching materials that make teaching much more effective and learning more fun.



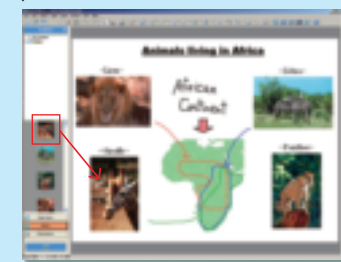
Add Information Easily Screen Keyboard

A keyboard can be displayed on the Elite Panaboard screen to allow operation of your PC keyboard. Using the Elite Panaboard, you can easily add or change information on materials produced using applications on your PC. This minimizes wasted time in the classroom, so you can make every minute count.

Lessons Are More Engaging and Effective

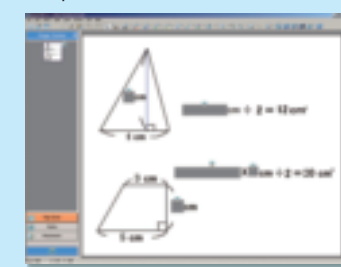
Smooth, Easy Lesson Preparation Elite Panaboard book

This contains Panasonic tools for creating and editing teaching materials. The variety of tools provided includes virtually everything you need to produce creative materials.



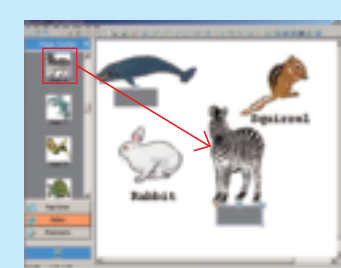
Preparing Quizzes with Hidden Answers Shade

This tool lets you hide parts of text and illustration. It is useful for covering the answer while students engage in solving the problem.



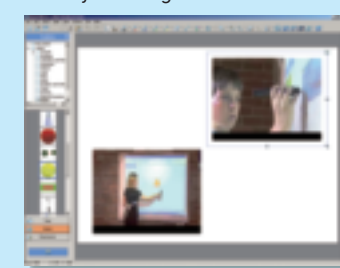
A Host of Illustrations Gallery

The Gallery contains illustrations covering a wide variety of topics that you can use to create teaching materials.



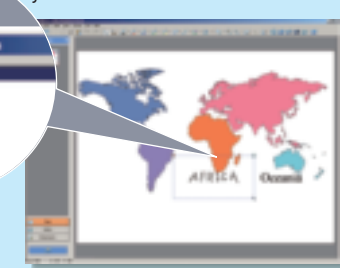
Adding Fun with Motion Images Movie Player

Images (avi, wmv, mpg, mpeg, or swf) can be inserted into the Elite Panaboard book and played back. Lessons are more engaging when they contain a variety of images.



Making Handwritten Characters Clearer Handwriting Recognition*

Handwritten characters are converted into typed characters, right before your eyes.



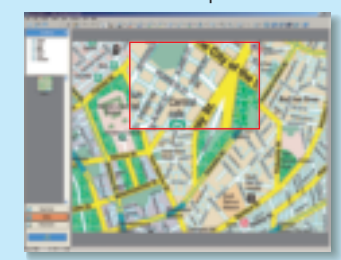
Diverse Applications Screen Shade

The sliding shade can conceal a part of the screen or the entire display. One typical use is to cover up the answer or explanation while students try to answer a question or solve a problem.



Improve Viewing Ease Magnifier

Use this tool to enlarge a part of the screen. For example, it is handy for enlarging and showing a part or section of a map.



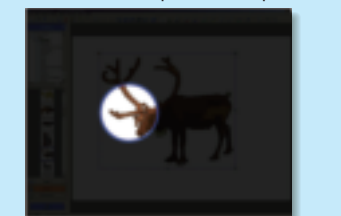
Saving Lessons as Motion Images Recorder

With this function, you can record the entire screen or any part of it that you designate. It is convenient for recording lessons for later review. If you connect a microphone to the PC, you can also record voices simultaneously.



Attracting the Students' Attention Spotlight

This tool lets you shine a spotlight on part of the screen. It is an effective way to attract the students' attention to a particular place on the board.



*An additional application is required for this function.
For detailed information, please access the following URL: <http://panasonic.co.jp/pcc/products/en/eboard/elite/download.html>
*Some languages and characters may not be correctly recognized.